

Aluminium Heatsink & Led Housing

sarnikon

Sarnikon



Establishment
2008



Head Office
ISTANBUL



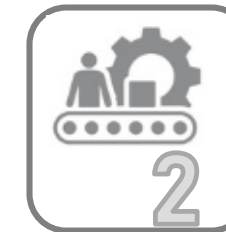
Sales Office
EGYPT
3 persons



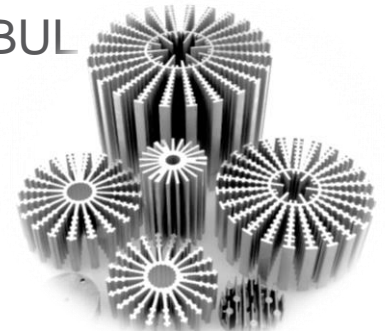
Employees
150



SMT/THT Assembly Line
2500 mt2
ISTANBUL



Aluminium Heatsink
3300 mt2
ISTANBUL



History



2008

- Import component from Far east, Europe, USA
- Production of electronic component heatsink
- Business in led sector with Osram LED chip , LED Heatsink.

2012

- Sales of OSRAM OS
- Became « Solution Partner» of «LED LIGHT FOR YOU»

2013

- Registered TR Dist. of Comus, OKW, Sirectifier, Belfuse

2015

Became TR Dist. Of OSRAM OS and Khatod

History



2016

SMT & THT assembly line established.

Signed TR Dist.Agreement with WAGO,Bi-Sonic, Brightking, Landwin, StarPower.

2017

Became Dist of Osram OS Egypt ,Qatar, UAE, Suudi Arabia Pakistan

Started to sell OSRAM DS Products

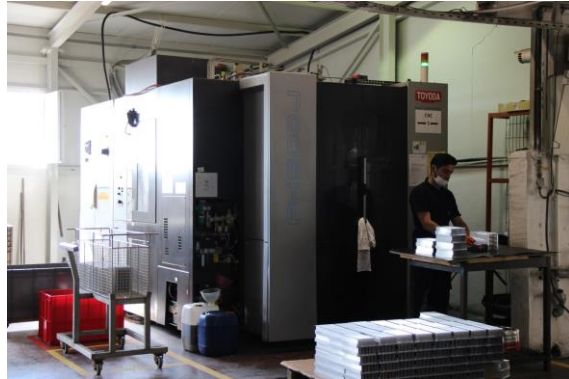
Started to DIP Assembly

2019

Became EMS (*Electronic Manufacturing Service*) supplier of OSRAM

SMT/THT Assembly line capacity increased.

Production



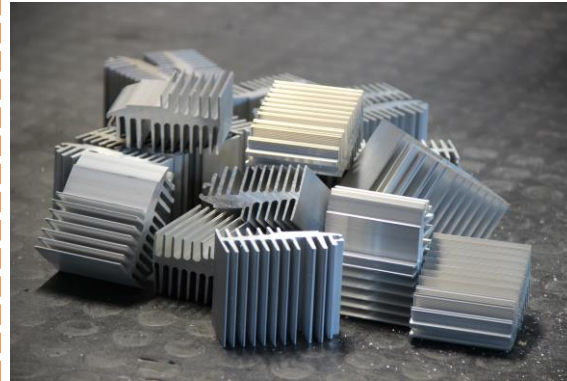
Cutting Process

CNC Work Process

Production



Drilling Process



Ultrasonic Washing



Warehouse

Quality Certification



ISO 9001:2015

Quality Management System

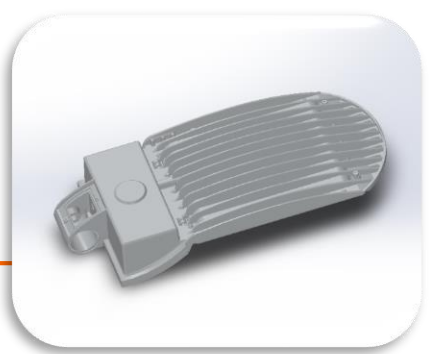
ISO 14001:2015

Environmental Management System

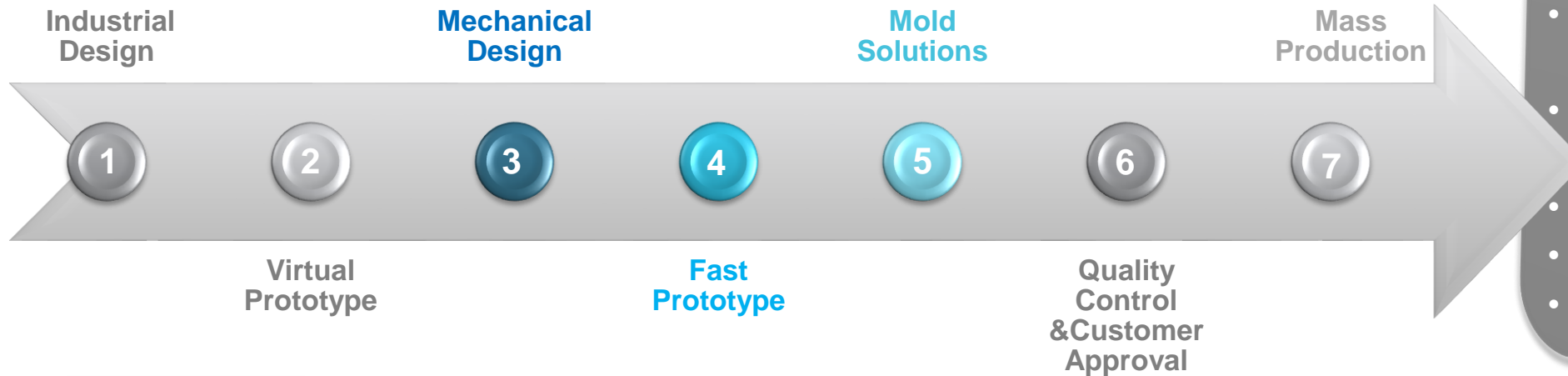
ISO 10002:2018

The Customer Satisfaction and Compliance
Management System

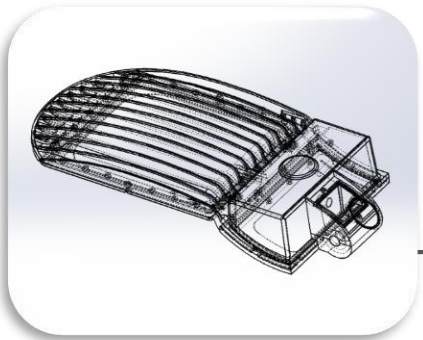
Product Development & Design



Customer Oriented



- Early response & Solution Offers
- Short lead times for samples and prototypes
- Flexible production
- Design and drawing support
- High Production Capacity



Product Groups



Outdoor

- Street Lighting
- Projector Lighting
- Wallwasher Lighting
- Park & Garden Lighting
- Tunnel Lighting
- Skiving Heatsinks



Indoor

- Flush Mounted
- Surface Mounted
- Downlight
- Ray Spot
- Fluorescent Model
- Linear Lighting



Industrial

- Etange Armatures
- Canopy
- Ex-Proof



Component Heatsink

- Injection Heatsinks
- Press Heatsinks
- Integrated Heatsinks
- Electronic Circuit Heatsink
- Regulator Heatsink
- Standard Extrusion Heatsink
- Fan Type Heatsink
- Lamella & Skiving Heatsink

Aluminum Heatsinks & Led Housing | Outdoor | Street & Projector & Tunnel Lighting



IP67



Material

- 6063 Quality Natural Anodized Aluminum
- High-strength Tempered Glass / Polycarbon Cover (IK08 Certificated)
- Injection Side Covers
- Possibility of application in the desired length

Technical Spec

- Design suitable for IP-67 waterproof

Application Areas

- General Lighting Areas
- High ways
- Stadiums
- Production Areas
- Car park



IP67

Material

- Etial 150 Aluminum (Injection)
- High strength Tempered Glass / Polycarbon Cover / Lens (IK08 Certificated)
- Connection Accesories
- Easy montage

Technical Spec

- Design suitable for IP-67 waterproof
- Electrostatic Powder Coated

Application Areas

- General Lighting Areas
- High ways
- Stadiums
- Production Areas
- Car park

Aluminum Heatsinks & Led Housing | Outdoor | **Wallwasher & Park/Garden**



IP67



IP67

Material

- **6063 Quality Natural Anodized Aluminum**
- High-strength Tempered Glass / Polycarbon Cover (IK08 Certificated)
- Injection Side Covers
- Possibility of application in the desired length

Technical Spec

- Design suitable for IP-67 and IP-65 waterproof

Application Areas

- General Lighting Areas
- High ways
- Stadiums
- Production Areas
- Car park



Material

- **Etial 150 Aluminum (Injection)**
- High strength Tempered Glass / Polycarbon Cover / Lens (IK08 Certificated)
- Connection Accesories
- Easy montage

Technical Spec

- Design suitable for IP-67 waterproof

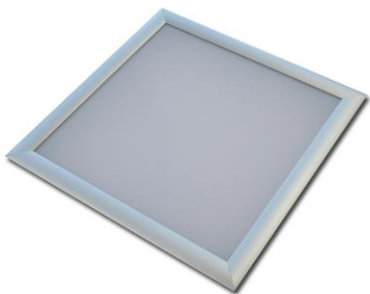
Application Areas

- General Lighting Areas
- High ways
- Stadiums
- Production Areas
- Car park

Aluminum Heatsinks & Led Housing | Indoor | Flush Mounted /Surface Mounted & Downlight & RaySpot



- LP-63 Surface mounted



- LP-66 Flush Mounted

Material

- **6063 Quality** Natural Anodized Aluminum
- PMMA Plexi
- 30x30 - 30x60 - 30x90 - 30x120 -
- 60x60 - 60x90 cm

Technical Spec

- Plexi with high light transmittance and homogeneous distribution

Application Areas

- Shop
- Office
- The mall
- School
- Hospital
- Market



- Eks.



- Enj.



Material

- **6063 Quality** Natural Anodized Aluminum / **Etial 150** Aluminum (Injection)
- Stainless reflector & ring
- PMMA Plexi
- COB LED compatible extrusion heatsink

Technical Spec

- Plexi with high light transmittance and homogeneous distribution

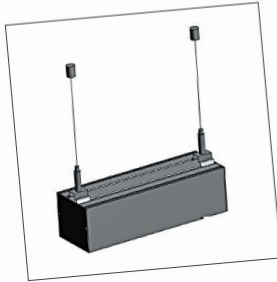
Application Areas

- Shop
- Office
- The mall
- School
- Hospital
- Market

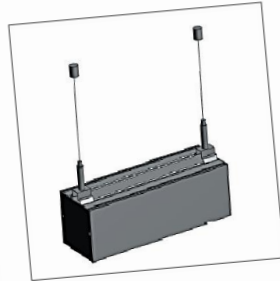
Aluminum Heatsinks & Led Housing | Indoor | **Florescent & Linear Lighting**



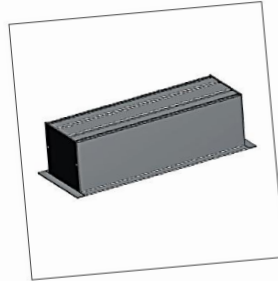
LP-60



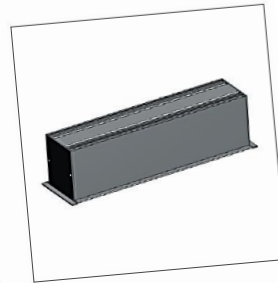
LP-84



LP-91



LP-106



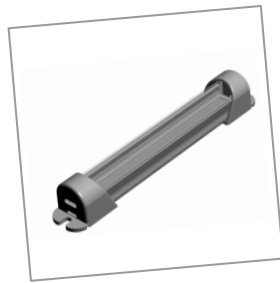
LP-74



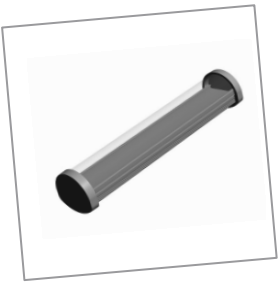
FL-07



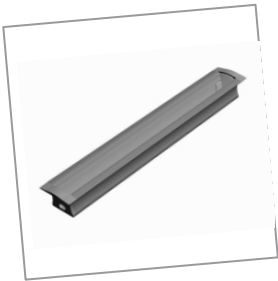
FL-10



FL-12



FL-15



FL-25

Material

- 6063 Quality Natural Anodized Aluminum
- Anodizing and Paint Option
- Polycarbonate plexi
- Plastic End Cap
- Steel suspension kits

Technical Spec

- PC with non-yellowing high light transmission
- IP-40
- Application up to 6 m

Application Areas

- Shop
- Office
- The mall
- School
- Hospital
- Market



Aluminum Heatsinks & Led Housing | Industrial Products | Ex-Proof & Etange & Canopy



• Exp-17/18

Material

- 6063 Quality Natural Anodized Aluminum
- IK08 Tempered Glass
- Aluminum Casting Side Covers

Technical Spec

- Zone 1 & 2 compatible
- IP-67

Application Areas

- Factory and Workshops
- Petrol Stations



Material

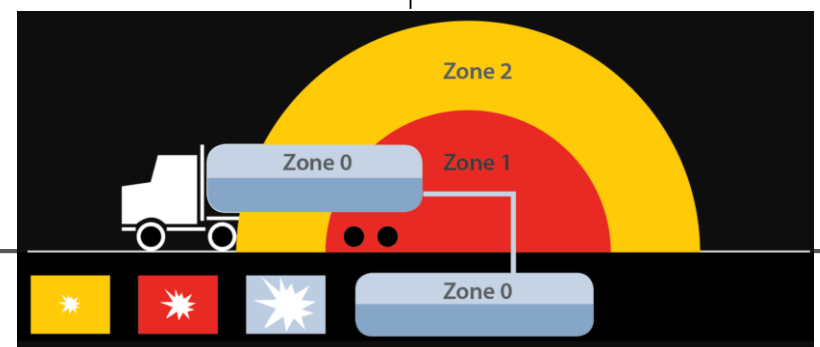
- 6063 Quality Natural Anodized Aluminium IK08 Tempered Glass
- 1,5 MM DKP Painted Canopy Frame
- Lens Compatible design
- Easy Assembly
- Esthetic look

Technical Spec

- IP-67

Application Areas

- Factory and Workshops
- Petrol Stations



Aluminium Heatsinks & Led Housing | Component Heatsinks

Designing

Quality
Material

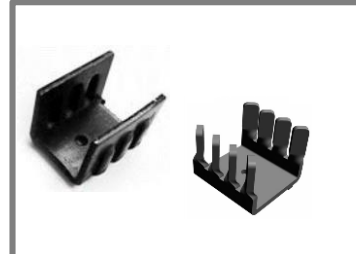
On Time
Delivery

Quality
Workmanship



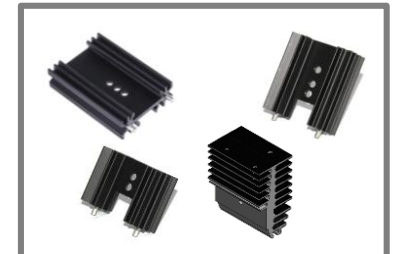
Injection Heatsinks

- Design according to customer request
- Covering
- Drill work



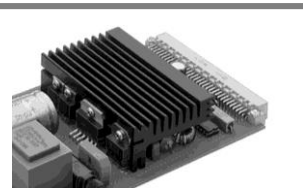
Press Heatsinks

- Design according to customer request
- Anodizing option
- Drill work/ Standard length



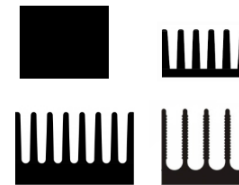
Integrated Heatsinks

- Cutting service to desired length
- Anodizing option
- Drill and CNC works
- Pin and Pin driving work



Electronic Circuit
Heatsinks

- Design according to customer request
- Anodizing option
- CNC
- Cutting to desired length



Regulator Heatsink

- Cut to desired length
- Anodized
- Drill and CNC



Standard Heatsinks

- Cut to desired length
- Anodized
- CNC



Fan Heatsinks

- Standards compatible with fans
- Different design options
- CNC
- Cutting to desired length
- Anodizing option

Voltage Regulators



- 29KS
- 49KS
- 151AS
- 21AS ...

Welding Machines



- 110AS
- 102AS
- 154AS
- 45AS
- 276AS ...

Thyristor Modules



- Müşterilere özel tasarımlar

Uninterrupted Power Supply



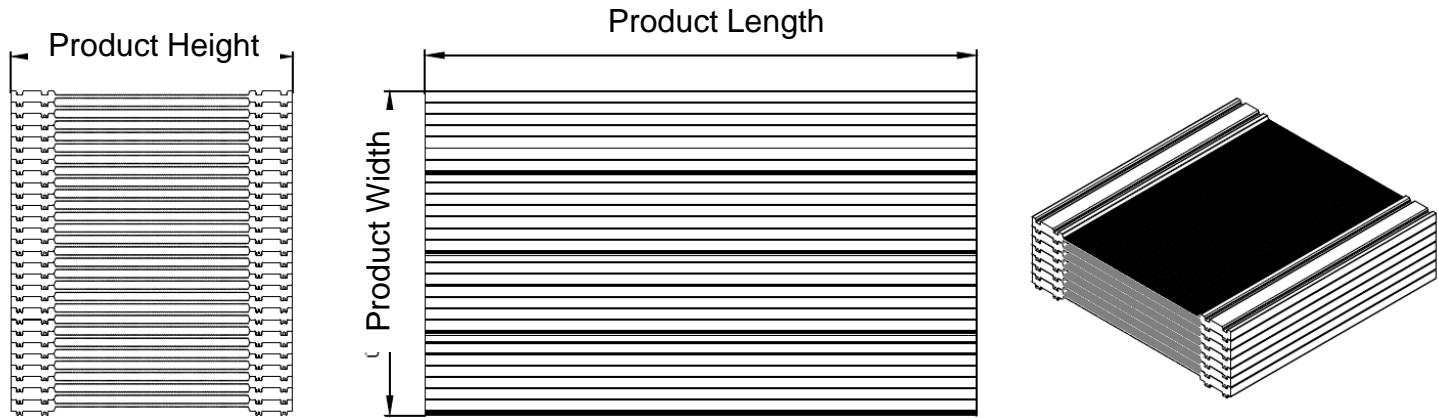
- 192AS / 193AS
- 160AS
- 185AS ..

Inverters

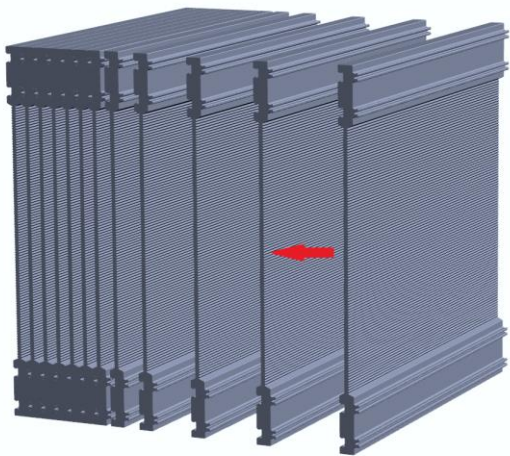


- 732AS
- 733AS
- 735AS

Aluminium Heatsinks & Led Housing | Component Heatsinks | **Lamella Heatsink**



Product Code	Product Height	Product Width	Product Length
806BS	145,63 MM	5,95 MM x Number of Fin	0 < 3000 MM
121BS	121 MM	6,00 MM x Number of Fin	0 < 3000 MM
145BS	145,60 MM	6,00 MM x Number of Fin	0 < 3000 MM



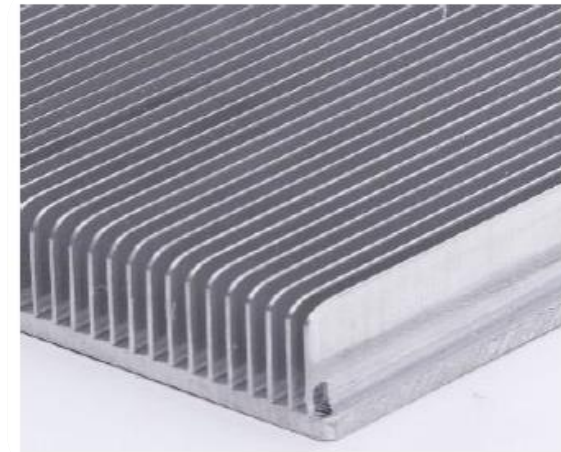
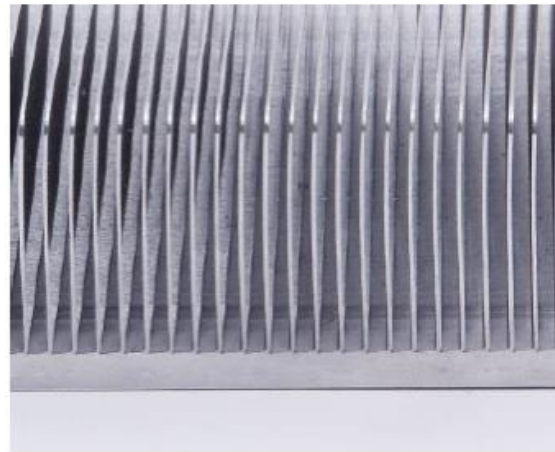
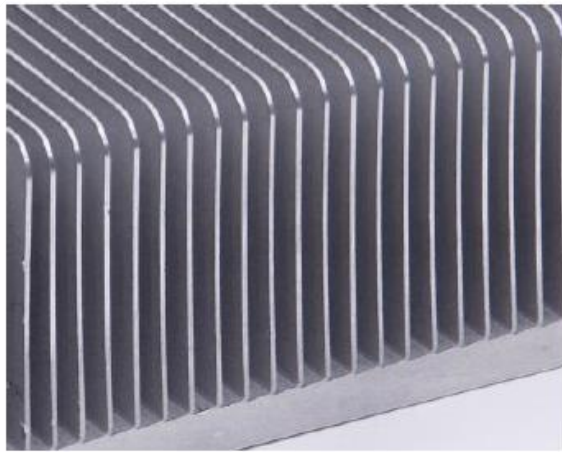
Aluminium Heatsinks & Led Housing | Component Heatsinks | Skiving Heatsinks

Features

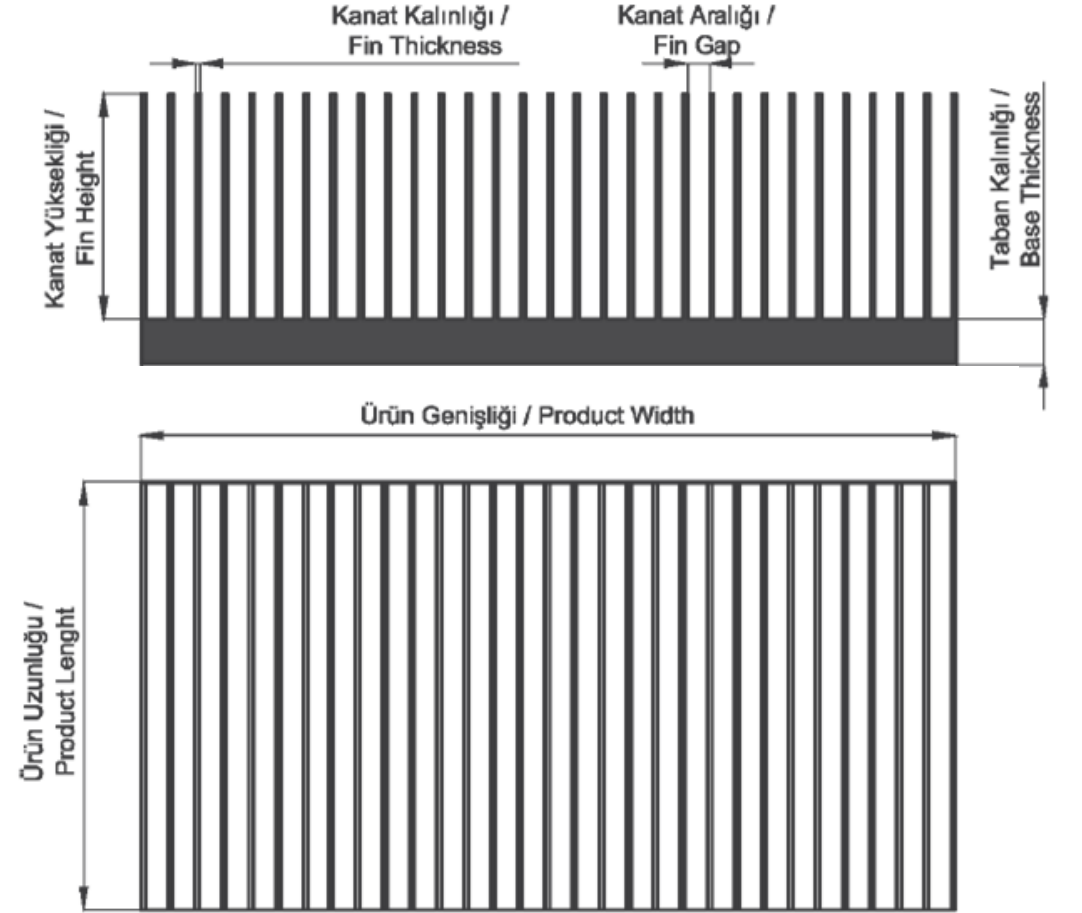
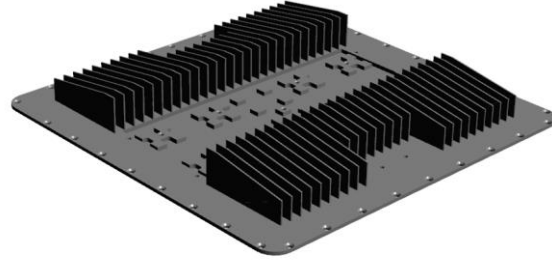
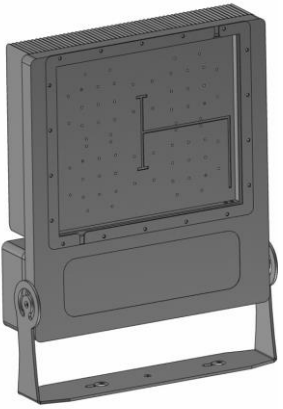
- Fin density which cannot be achieved with extrusion technology,
- It does not require extra interface between the fins and the base,
- More design flexibility,
- High power cooling performance in narrow space,
- High fin density and aspect ratio possibility,
- Thermal conductivity superior to extrusion and injection,
- It does not require mold cost and extra welding labor.
- Can be customized with embedded heat pipes to increase performance when required.

Applications

- Lighting
- White appliance industry
- Automotive components
- Computer and electronic components
- Telecommunication equipment
- Industrial equipment and components



Aluminium Heatsinks & Led Housing | Component Heatsinks | Skiving Heatsinks



Fin Thickness	Fin Gap	Fin Height	Base Thickness	Product Width	Product Length
0,8 mm – 1 mm	> 2 mm < 8 mm	< 60 mm	< 25 mm	< 660 mm	< 300 mm



Optional Services

CNC Service



Planning

Pre-production technical drawing and CAD preparation



Manufacturing

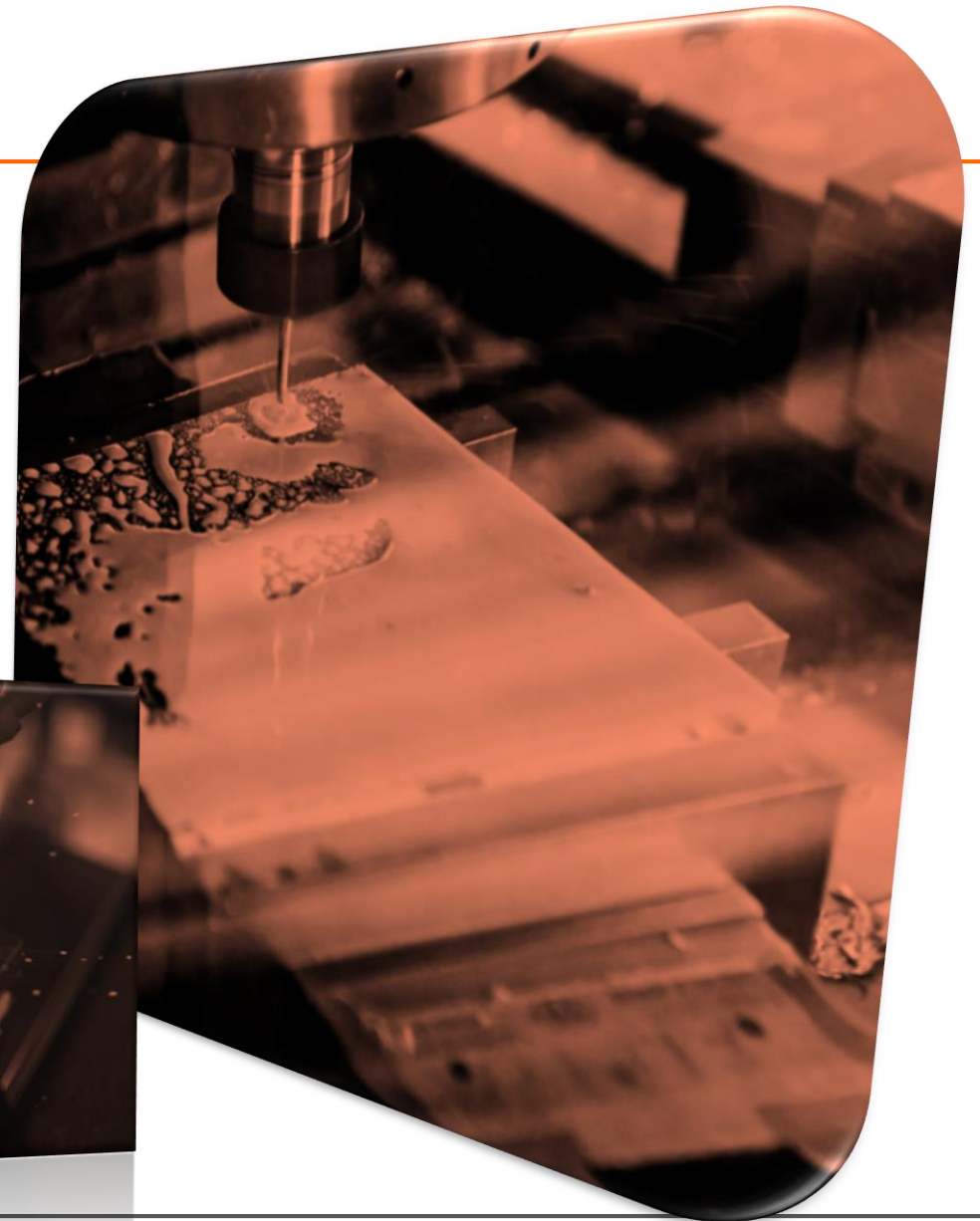
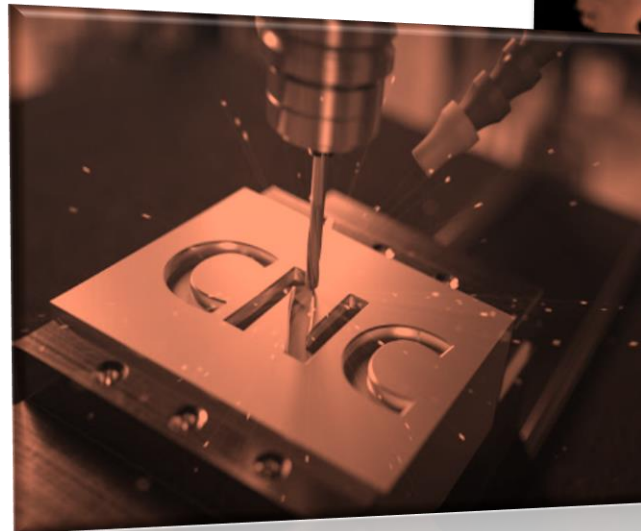
Production with new generation CNC machines

- CNC vertical machining
- CNC deep hole drilling
- Stoning



Quality Control

Perfect work delivery with post-production quality control processes



Metal Processing Service

Works

- R&D
- Cutting, grid, punching and forming operations on copper, brass, plastic and galvanized sheet products
- Laser cutting up to 25 mm
- Cutting and twisting up to 16 mm
- Welding
- Assembly



THANK YOU..



Ferhatpaşa 12.Sok
No.14 Ataşehir / İstanbul
-Turkey



www.sarnikon.com

 **OUTLET**
COMPONENT "BEST PRICE ZONE"
www.outletcomponent.com



+90 216 447 60 60

sarnikon